

LEDFL10

10W Non-Dimmable LED Flood Light
(12V DC or 240V)

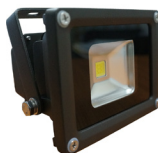


GRC Lighting

R & C Agency International
Lighting Specialists for over 15 years



Standard



Anti Corrosive



RGB

Description: 10W LED flood light in various characteristics suitable for in-door and out-door. Available in low voltage and 240V to suit various installation applications. Anti-corrosive version to suit for coastal environment. RGB Flood light (240V only) features colour changing option. RGB remote control included - controlled through radio frequency. Recommended Battery Model for RGB remote controller (not included) IS CR2025 Lithium 3V. Colour will reset if turned off via switch. Please use remote included.

Working Temperature: - 40° C to 55° C

Material: Aluminium (Standard and RGB version)
Aluminium with anti-corrosion coating (Anti-Corrosion version)

Dimmable: Optional (240V version only)

Warranty: 2 years replacement only warranty

*Note: Low voltage versions are tested with our IP66 drivers. Cannot guarantee compatibility with all 12VDC transformers



Item Code	Body Type	Wattage	Input	Lumen Output	Beam	Colour Temp	Fitting Colour	Size L x W x H
LEDFL10	Standard	11W	240V	700 Lm / 800 Lm	120°	3000K / 6000K / Blue / Green / Red	Black / Grey	115 x 86 x 105 mm
LEDFL10-LV	Standard	11W	12V DC	700 Lm / 800 Lm	120°	3000K / 6000K / Blue / Green / Red	Black / Grey	115 x 86 x 105 mm
LEDFL10-ANTC	Anti-Corrosive	11W	240V	700 Lm / 800 Lm	120°	3000K / 6000K / Blue / Green / Red	Black	115 x 86 x 105 mm
LEDFL10-AN-LV	Anti-Corrosive	11W	12V DC	700 Lm / 800 Lm	120°	3000K / 6000K / Blue / Green / Red	Black	115 x 86 x 105 mm
LEDFL10RGB	Standard	10W	240V	-	100°	RGB	Black	115 x 86 x 87 mm