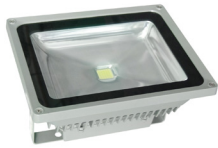


LEDFL50
50W LED Flood Light
(12V DC or 240V)



GRE Lighting

R & C Agency International
Lighting Specialists for over 15 years



Standard



RGB

Description: 50 Watt floodlights available in either 12v DC low voltage OR 240v Mains to suit various installation applications.

Working Temperature: - 20° C to 50° C

Material: Aluminium (Standard and RGB version)

Dimmable: Low voltage: No
240v: Phase dimmable option available

RGB Flood note RGB flood lights come with one remote per fitting. 1 remote can control multiple units due to radio frequency operation. Please note as such, it is impossible to set separate colours to separate floodlights that are all in same area. Due to fractional micro-second delays in the internal controller, it is also impossible to synchronize colour change modes (such as flash/fade/strobe). Lastly, please note when set on a single colour (eg Blue, the output is only approximately 15w).



Warranty: 2 years replacement only warranty

*Note: Low voltage versions are tested with our IP66 drivers. Cannot guarantee compatibility with all 12VDC transformers. Low voltage variants require at least 75w capacity when calculating transformers required.

Item Code	Body Type	Wattage	Input	Lumen Output	Beam	Colour Temp	Fitting Colour	Size L x W x H
LEDFL50	Standard	57W	240V	3800 Lm / 4000 Lm	100°	3000K / 6000K	Grey	290 x 236 x 150 mm
LEDFL50-LV	Standard	57W	12V DC	3800 Lm / 4000 Lm	100°	3000K / 6000K	Grey	290 x 236 x 150 mm
LEDFL50RGB	Standard	50W	240V	-	100°	RGB	Grey	288 x 238 x 150 mm

R&C AGENCY INTERNATIONAL

94 Wecker Road,
Mansfield, QLD, 4122

Email: sales@rcagency.com.au
Ph: (07) 3216 2888
Fax: (07) 3216 2999

Opening Hour:
8:00am to 4:30pm Monday to Friday
*Showroom by appointment only